

DE Besuchen Sie unsere Website über den folgenden QR Code oder Weblink um weitere Informationen zu diesem Produkt oder die verfügbaren Übersetzungen dieser Anleitung zu finden.

EN Visit our website via the following QR Code or web link to find further information on this product or the available translations of these instructions.

FR Si vous souhaitez obtenir plus d'informations concernant ce produit ou rechercher ce mode d'emploi en d'autres langues, rendez-vous sur notre site Internet en utilisant le code QR ou le lien correspondant.

NL Bezoek onze internetpagina via de volgende QR-code of weblink, voor meer informatie over dit product of de beschikbare vertalingen van deze gebruiksaanwijzing.

ES ¿Desearía recibir unas instrucciones de uso completas sobre este producto en un idioma determinado? Entonces visite nuestra página web utilizando el siguiente enlace (código QR) para ver las versiones disponibles.

IT Desidera ricevere informazioni esaustive su questo prodotto in una lingua specifica? Venga a visitare il nostro sito Web al seguente link (codice QR Code) per conoscere le versioni disponibili.



www.bresser.de/download/SL-LED/Manual

GENERAL WARNINGS

⚠ DANGER OF BODILY INJURY!

Do not use in the presence of children or animals. Store out of reach of children and animals.

Never touch parts of the device during operation or before it has cooled down completely (approx. 45 min. after switching off)!

⚠ RISK OF GLARE!

Make sure that people and animals do not look into the light. The high luminosity can cause glare to the eyes and afterimages. This impairment of vision can lead to accidents.

⚠ RISK OF MATERIAL DAMAGE!

Make sure that no one can trip over connection cables of the device. The device could be knocked over.

The manufacturer accepts no liability for damage to property caused by improper or insufficiently safe installation!

Only use the recommended power supply unit or the recommended rechargeable batteries⁴ for the power supply!

The manufacturer accepts no liability for voltage damage caused by the use of an unsuitable power adapter!

⚠ DANGER OF AN ELECTRIC SHOCK!

This device contains electronic parts that are powered by a power source (power adapter). Only use the device as described in the manual. Otherwise, you run the DANGER of an ELECTRIC SHOCK.

Never bend, squeeze or pull power cables, connecting cables, extensions or connectors. Protect cables from sharp edges and heat. Check this device, cables and connections for damage before use.

Never attempt to operate a damaged device, or a device with damaged electrical parts! Damaged parts must be replaced immediately by an authorized service agent.

Operate the device only in a completely dry environment and do not touch the device with wet or damp body parts.

⚠ FIRE/EXPLOSION HAZARD!

Always place the device in such a way that it cannot tip over and ensure that it is stored in a reasonably safe place.

- Keep children and animals away from the device! They could knock the device over.
- Make sure that no one can trip over connection cables. The device could be knocked over.
- Do not expose the device to high temperatures. Do not short-circuit the device or dispose of in fire! Excessive heat and improper handling can cause short circuits, fires and even explosions!
- Never cover the ventilation slots or cooling fins of the device during operation or until it has cooled down completely!
- Only use the recommended power supply unit or batteries⁴!

! IMPORTANT NOTE!

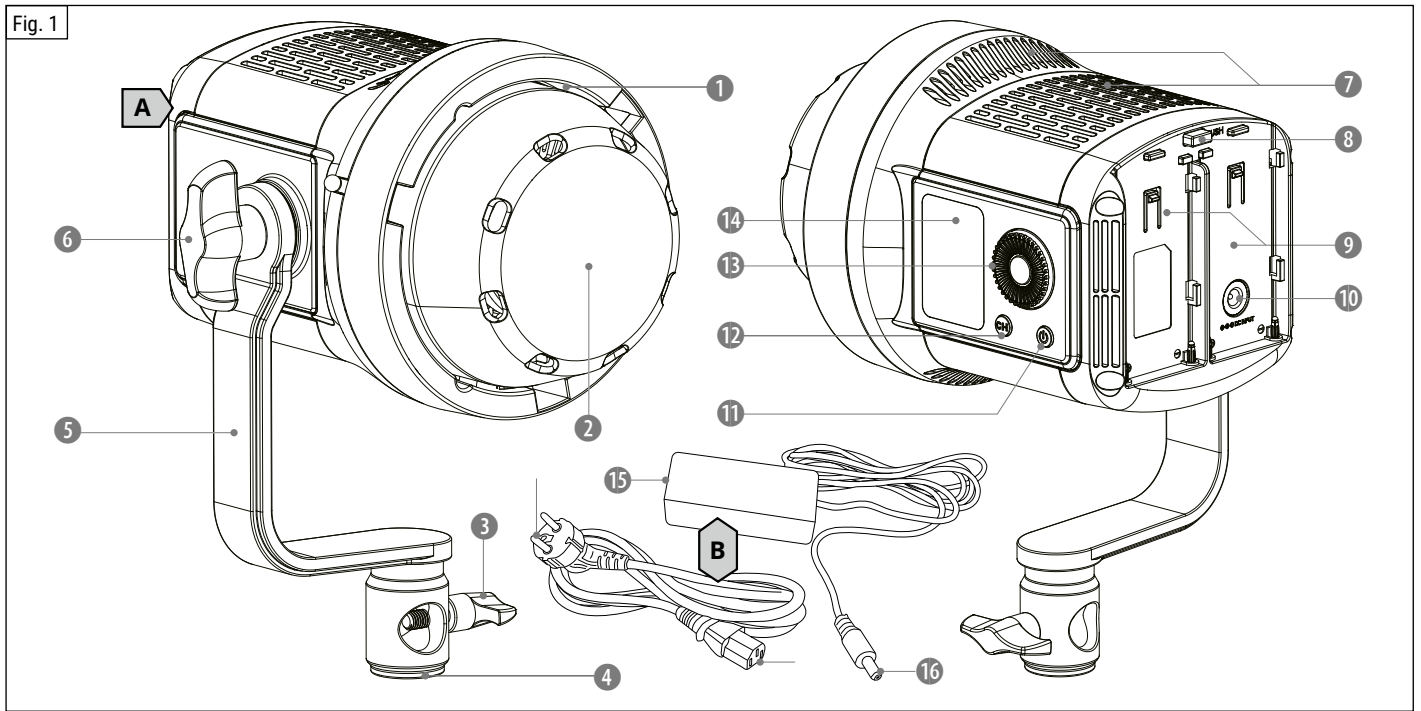
Do not disassemble the device! In the event of a defect, please contact your dealer. They will contact the Service Center and can arrange the return of this device for repair if necessary.

Disconnect the power supply by pulling the mains plug when the appliance is not in use, in case of a longer interruption of operation and before any maintenance and cleaning work.

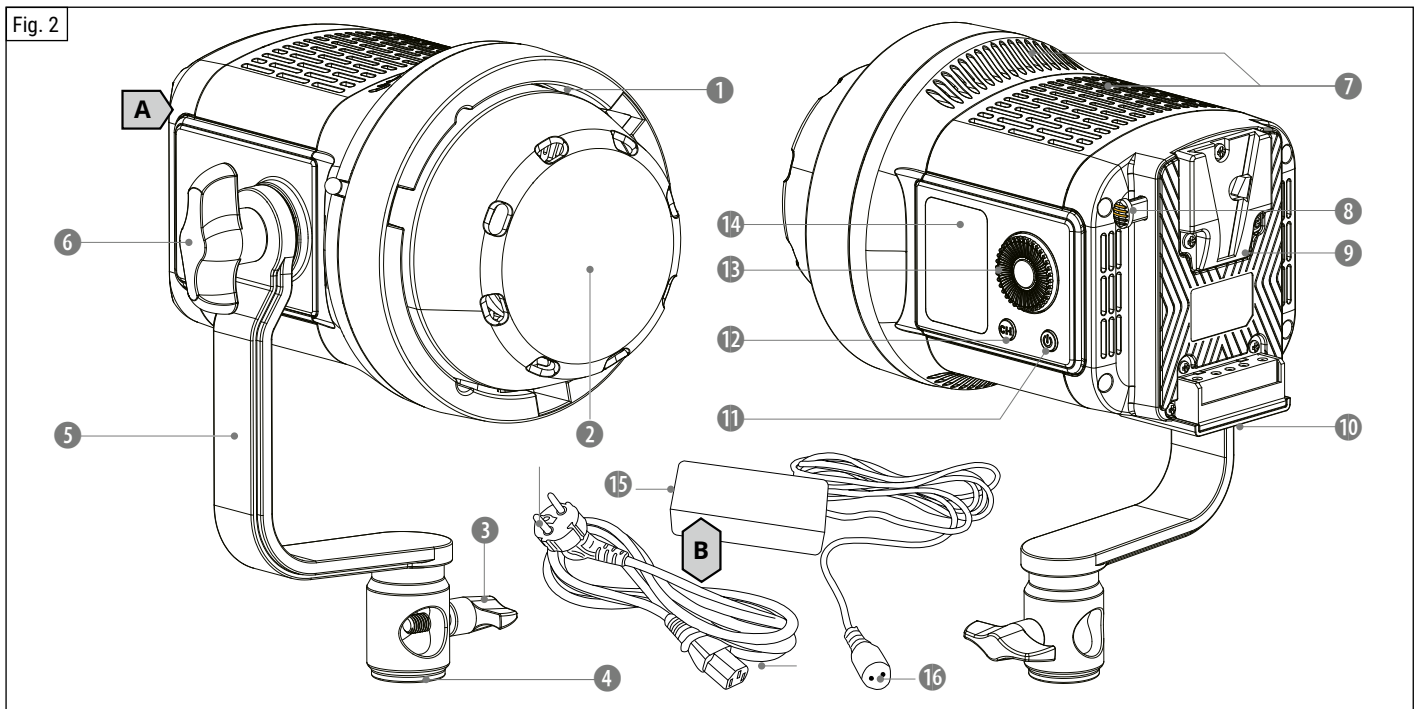
Place your device so that it can be disconnected from the power supply at any time. The power outlet should always be near your appliance and should be easily accessible, as the plug of the power cord serves as a disconnect device from the mains supply. To disconnect the unit from the mains, always pull the mains plug and never pull the cable!

Do not subject the device to excessive vibrations.

1 PARTS LIST & SCOPE OF DELIVERY



Model 80SL



Model 120SL

1.1 PARTS LIST (FIG. 1+2)

- ❶ Bowens-compatible pick-up ring
- ❷ LED module
- ❸ Fixing screw (tripod connection)
- ❹ Tripod connection
- ❺ Yoke arm
- ❻ Fixing screw (yoke arm)
- ❼ Cooling fins
- ❽ Push button (battery fixing)
- ❾ Battery pick-up
- ❿ Power connection socket
- ⓫ ⓪-knob
- ⓬ CH knob
- ⓭ Adjustment knob
- ⓮ LCD display
- ⓯ C14 socket
- ⓰ DC power plug
- ⓱ C13 plug
- ⓲ Mains plug

1.2 SCOPE OF DELIVERY (Fig. 1+2)

LED effect light with yoke arm and Bowens mount (1x)(A), mains adapter with mains and voltage cables (1x)(B), instruction manual

OPTIONALLY USABLE:

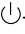
rechargeable battery⁴, accessories with Bowens or compatible connector⁴ (for more information see "11 Technical data")

⁴not included / Only use recommended accessories!

POWER SUPPLY:

NOTE: This device cannot be operated by battery and mains power at the same time! Before commissioning, make sure that only one of the two power sources is active. If both power sources are active during commissioning, this can lead to irreparable damage to the device! The manufacturer accepts no liability for this!

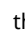
MAINS OPERATION

1. If necessary, switch off the device using the -knob (11) and remove the battery(ies).
2. Insert the DC hollow plug (16) into the power connection socket (10) on the device.
3. Insert the C13 plug (17) of the mains cable into the C14 socket (15) on the mains adapter.
4. Insert the plug of the mains power cable into the wall socket.
5. Switch on the device.

TIP: As an alternative to mains operation, the device can also be operated by means of a rechargeable battery⁴ (see Chapter 3.2).

3.2 BATTERY OPERATION

NOTE This function/use requires optional accessories that are not included in the scope of delivery: rechargeable battery.

1. If necessary, switch off the unit using the -knob (11) and disconnect it from the mains (pull out the mains plug (16)).
2. Insert the suitable battery⁴ into the battery holder so that it audibly clicks into place.
3. Switch on the device.
6. To remove the rechargeable battery⁴, switch off the device first. Push the push button for battery fixation completely and remove the battery from the battery holder at the same time.

TIP: As an alternative to battery operation, this device can also be operated using mains voltage (see "Mains voltage"). Chapter 3.1:

4 LIGHT MODE & ADJUSTMENT

1. Press the control dial (13) for approx. 3 seconds to switch between the continuous light mode and the scene light mode.
2. In continuous light mode, turn the control knob to adjust the light intensity of the dimmer between 10% and 100%.
3. In scene light mode, briefly press the control dial to switch between light intensity, scene light mode (turn the dial to switch between F1 to F6) and flash frequency (turn the dial to switch between 1 to 9).

Explanation of the scene light types:

F1: Paparazzi / F2: Fireworks / F3: Defective lamp
F4: Flash / F5: TV / F6: SOS

5 SLEWING THE LED LAMP

1. Hold the LED lamp in one hand and simultaneously loosen the fixing screw (6) on the yoke arm with the other hand.
2. Swivel the LED lamp to the desired position and tighten the fixing screw again.

6 MOUNTING THE LED LAMP ON A STAND⁴

NOTE: This function/use requires optional accessories that are not included in the scope of delivery: Photo tripod with spigot attachment.

1. Unscrew the fixing screw (3) for the tripod connection until the opening of the tripod connection is free.
2. Place the lamp with the tripod connection (4) on the spigot attachment⁴ of a tripod⁴ with sufficient load-bearing capacity.
3. Tighten the fixing screw so that the lamp is fixed to the stand without wobbling.

⁴not included


7 MOUNTING OF ACCESSORIES⁴ WITH BOWENS CONNECTION


NOTE: Before mounting accessories on the mounting ring, it is recommended to swivel the LED light and fix it in position so that the LED module points upwards.

Only accessories with Bowens connection can be used!

1. Insert the accessory⁴ with the existing three "lugs" into the corresponding recesses on the pickup ring (1).
2. Fix the accessory in the pickup ring by turning it slightly to the right or left.
3. For disassembly, first turn the accessory back in the pickup ring and then pull it off.

DISPOSAL

 Dispose of the packaging materials by type. Contact your local waste-disposal service or environmental authority for information on the proper disposal.

 Do not dispose of electronic devices in the household garbage! According to the European Directive 2002/96/EU on Waste Electrical and Electronic Equipment and its transposition into national law, used electrical equipment must be collected separately and recycled in an environmentally sound manner.

Observe the current legal regulations when disposing of the device! Information on proper disposal can be obtained from municipal waste disposal service providers or the Environmental Agency.


9 CLEANING

Before cleaning the device, disconnect it from the power supply (remove plug or remove batteries)!


Only use a dry cloth to clean the exterior of the device. To avoid damaging the electronics, do not use any cleaning fluid.

Protect the device from dust and moisture. Store it in the supplied bag or transportation packaging. The batteries should be removed from the unit if it has not been used for a long time.

EC DECLARATION OF CONFORMITY

 A "Declaration of conformity" in accordance with the applicable directives and corresponding standards has been prepared by Bresser GmbH. This can be viewed at any time upon request at www.bresser.de/download/SL-LED/CE/SL-LED_CE.pdf

UKCA DECLARATION OF CONFORMITY

 A "Declaration of conformity" in accordance with the applicable directives and corresponding standards has been prepared by Bresser GmbH. This can be viewed at any time upon request at www.bresser.de/download/SL-LED/UKCA/SL-LED_UKCA.pdf

11 TECHNICAL DATA

Model	80SL	120SL
Art. No.	F004543/F004545	F004544/F004546
Type	LED effect light	
LED illuminant	1 High-power LED module ¹ (COB)	
Max. Power	80W/60W ^{2,3}	120W/96W ^{2,3}
Luminous flux	7200LM	10800LM
Colour temperature	5500K (± 200K)	
Light dimming	10% to 100%	
Power supply	AC100-240V 50/60Hz via mains adapter (included)	
Optional power supply	DC19V4.7A via battery ⁴	DC19V4.7A via battery ⁴
Battery type ⁴	2 x NP-F960 Li-Ion	1 x V-Lock Li-Ion
Dimensions	30x70cm	

¹The LEDs have a long lifetime and are not replaceable due to technical reasons.

²The power of an LED lighting is higher than that of conventional halogen lights. Therefore, LED's have a lower wattage than comparable lights.

³Maximum power when used under mains voltage via mains adapter; in battery operation the maximum power is reduced by approx. 25% (low power indication)

⁴Not included in the scope of delivery / Only use recommended accessories!

GUARANTEE

The regular warranty period is 5 years and begins on the day of purchase. You can consult the full guarantee terms as well as information on extending the guarantee period and details of our services at www.bresser.de/warranty_terms.



www.bresser.de/warranty_terms

SERVICE

DE AT CH BE

Bei Fragen zum Produkt und eventuellen Reklamationen nehmen Sie bitte zunächst mit dem Service-Center Kontakt auf, vorzugsweise per E-Mail.

E-Mail: service@bresser.de
Telefon*: +49 28 72 80 74 210

BRESSER GmbH

Kundenservice
Gutenbergstr. 2
46414 Rhede
Deutschland

*Lokale Rufnummer in Deutschland (Die Höhe der Gebühren je Telefonat ist abhängig vom Tarif Ihres Telefonanbieters); Anrufe aus dem Ausland sind mit höheren Kosten verbunden.

GB IE

Please contact the service centre first for any questions regarding the product or claims, preferably by e-mail.

E-Mail: service@bresseruk.com
Telephone*: +44 1342 837 098

BRESSER UK Ltd.

Suite 3G, Eden House
Enterprise Way
Edenbridge, Kent TN8 6HF
United Kingdom

*Number charged at local rates in the UK (the amount you will be charged per phone call will depend on the tariff of your phone provider); calls from abroad will involve higher costs.

FR BE

Si vous avez des questions concernant ce produit ou en cas de réclamations, veuillez prendre contact avec notre centre de services (de préférence via e-mail).

E-Mail: sav@bresser.fr
Téléphone*: 00 800 6343 7000

BRESSER France SARL

Pôle d'Activités de Nicopolis
314 Avenue des Chênes Verts
83170 Brignoles
France

*Prix d'un appel local depuis la France ou Belgique

NL BE

Als u met betrekking tot het product vragen of eventuele klachten heeft kunt u contact opnemen met het service centrum (bij voorkeur per e-mail).

E-Mail: info@bresserbenelux.nl
Telefoon*: +31 528 23 24 76

BRESSER Benelux

Smirnoffstraat 8
7903 AX Hoogeveen
The Netherlands

*Het telefoonnummer wordt in het Nederland tegen lokaal tarief in rekening gebracht. Het bedrag dat u per gesprek in rekening gebracht zal worden, is afhankelijk van het tarief van uw telefoon provider; gesprekken vanuit het buitenland zullen hogere kosten met zich meebrengen.

ES IT PT

Si desea formular alguna pregunta sobre el producto o alguna eventual reclamación, le rogamos que se ponga en contacto con el centro de servicio técnico (de preferencia por e-mail).

E-Mail: servicio.iberia@bresser-iberia.es
Teléfono*: +34 91 67972 69

BRESSER Iberia SLU

c/Valdemorillo,1 Nave B
P.I. Ventorro del Cano
28925 Alcorcón Madrid
España

*Número local de España (el importe de cada llamada telefónica dependen de las tarifas de los distribuidores); Las llamadas des del extranjero están ligadas a costes suplementarios..

Bresser GmbH
Gutenbergstraße 2
46414 Rhede · Germany
www.bresser.de

    @BresserEurope



© 2021 Bresser GmbH, 46414 Rhede, Germany.
No part of this manual may be reproduced, transmitted, transcribed or translated into any language in any form without the written permission of Bresser GmbH.
Errors and technical changes reserved.
Manual_F004543-F004544-F004545-F004546_BR-SL_en_BRESSER_v062021a